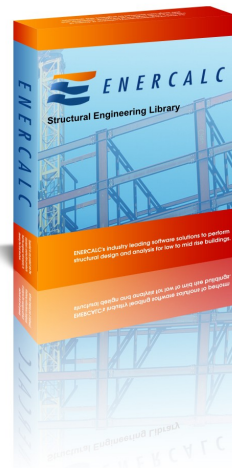




## ENERCALC® SEL Activation Manual

**ENERCALC, LLC**

© 2024 ENERCALC, LLC



# 1 Activation (Not required to access cloud version)

## Activation

ENERCALC® SEL has a security system that requires you to "Activate" the software. You will copy & paste a **Product Control Code (PCC)** into the software and then use an **[Internet Activate]** button to get permission from our Internet Activation server to run as a registered program.

You can install the software on as many computers you want. Paste in the Product Control Code into each software installation.

You will use "Internet Activation" and "Internet Deactivation" to activate the software on each computer up to the number of simultaneous seats you have purchased for your "KW" user registration number. Deactivate one or more seats to free them up for use on another computer, or use "Automatic Activation" so the seats are automatically made available when the application is closed.

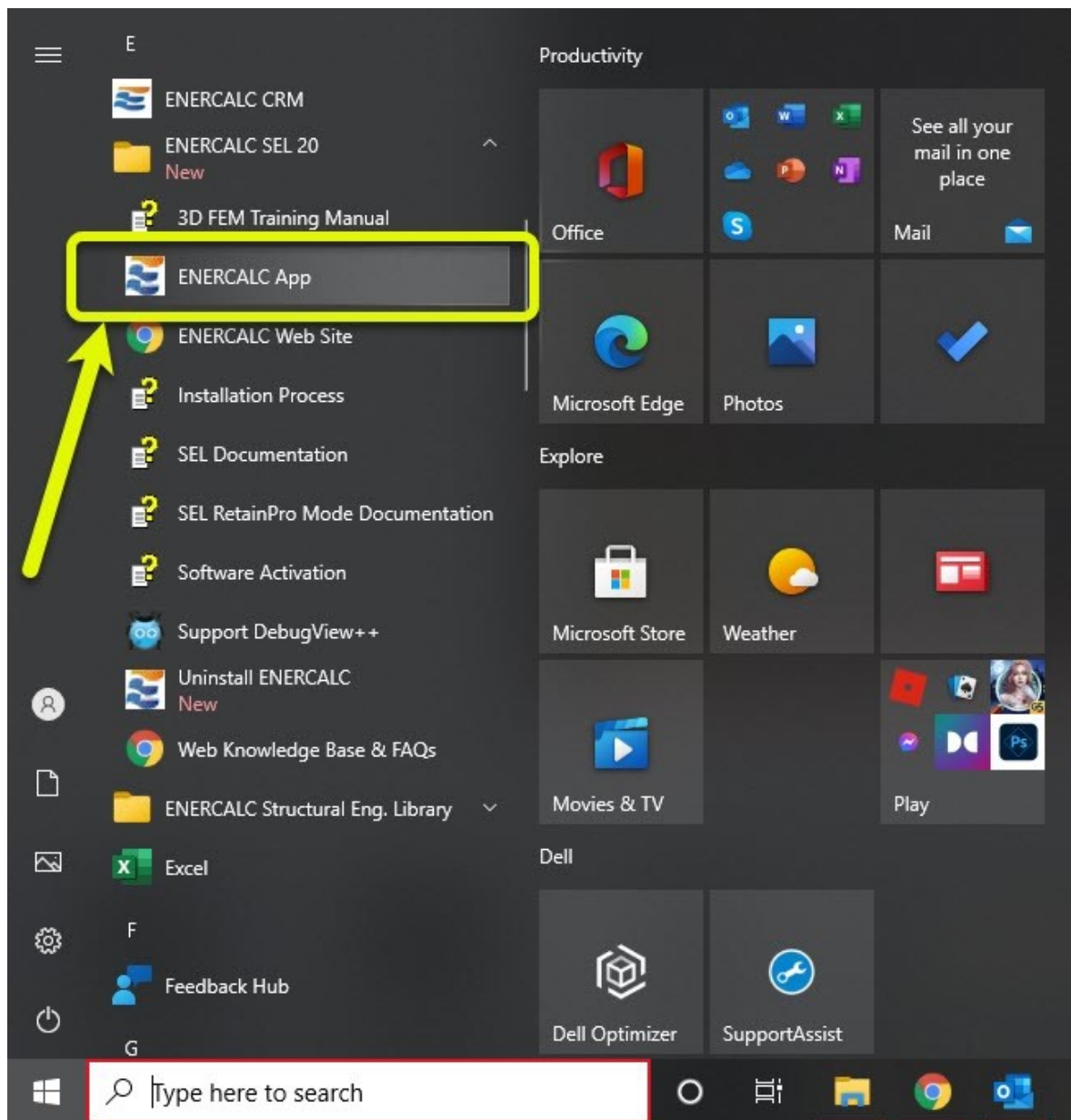
You only need to be Internet connected for the brief moment you activate or deactivate. Otherwise the computer will remember it's activated (when using Indefinite Activation), or it will reactivate the next time you start the program (when using Automatic Activation).

Our Internet Activation System uses HTTPS REST API calls to connect to Enercalc.net for communications. Most of the time it works great without any changes to firewalls or anti-virus software. Sometimes you must pause your anti-virus software briefly during activation or deactivation, or add a firewall rule to allow it to connect. In larger companies, your IT staff will usually manage this for you.

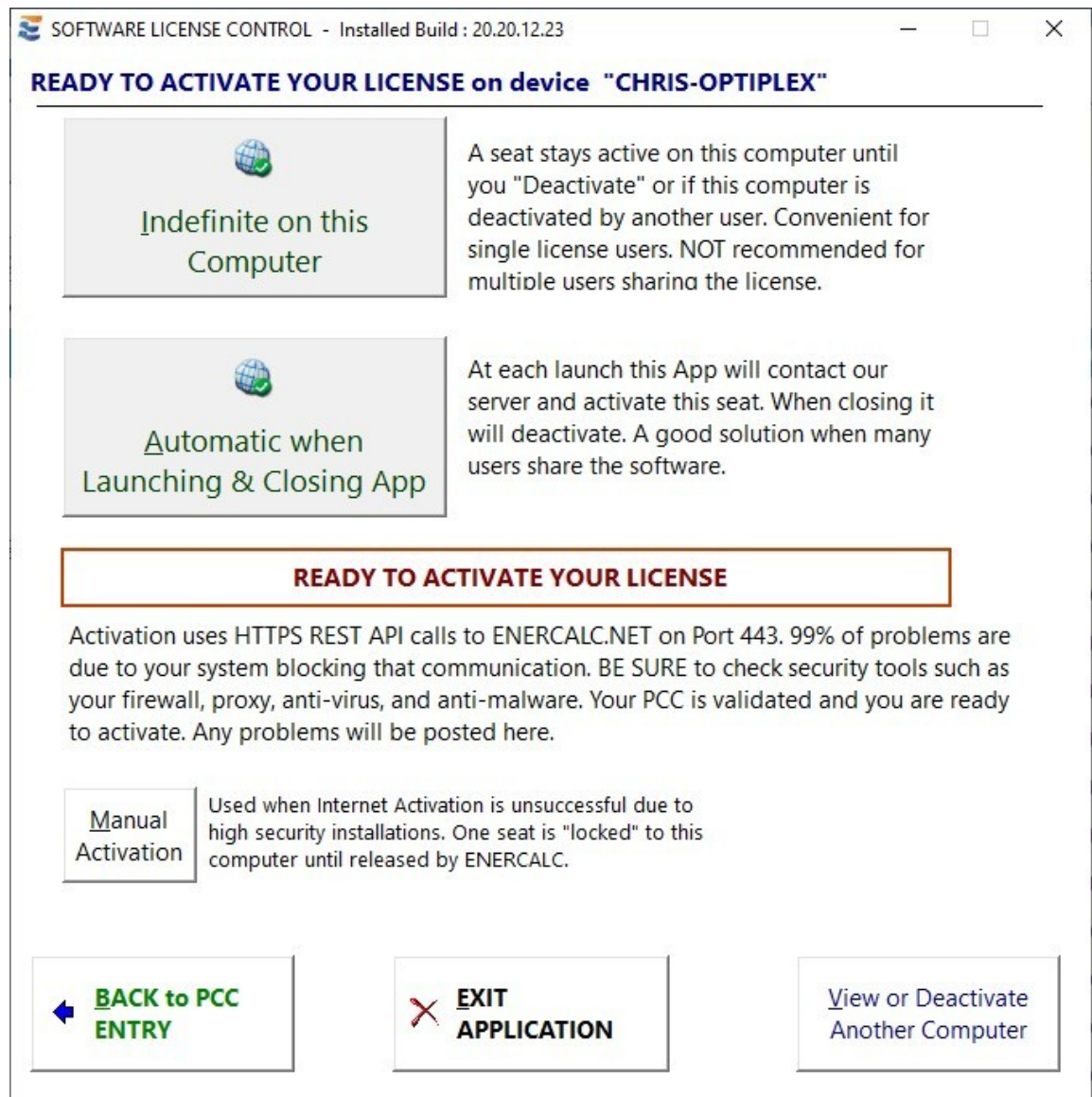
Now start ENERCALC SEL, either by double-clicking the desktop shortcut named "ENERCALC App"...



Or by clicking the Windows Start button and navigating to the "ENERCALC SEL 20" program group and clicking "ENERCALC App"...



If the software is not currently activated the window below will be displayed.



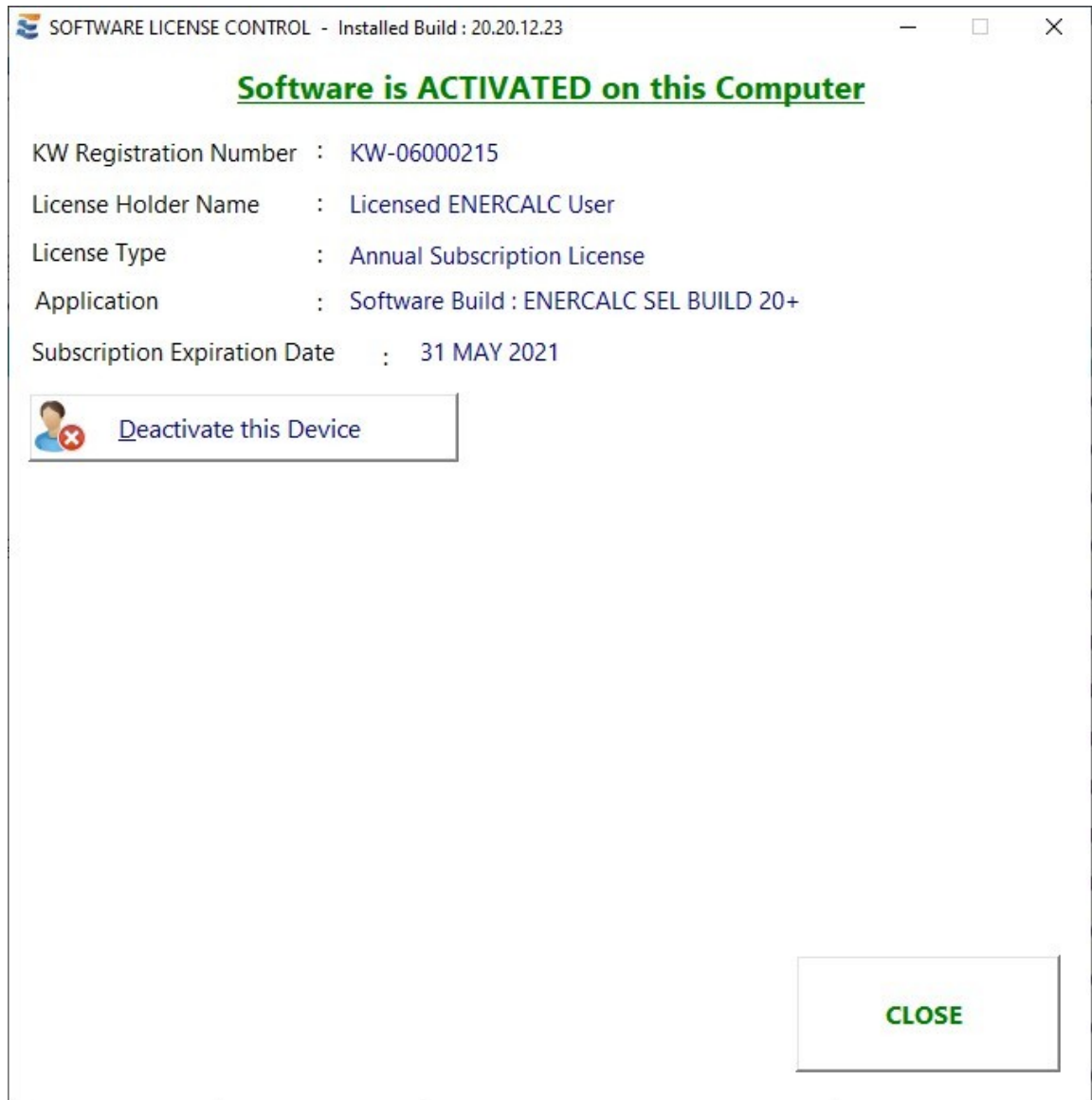
This is the typical license activation window. It presents the two primary activation options:

**Indefinite:** This selection will activate the program and leave it activated. Each time you start the software thereafter it will launch immediately as "activated".

**Automatic:** Deactivates on exit and then automatically activates on launch. Ideal for larger firms with numerous users, sometimes in different locations.

(The [Manual Activation] button is used in cases where Internet Activation does not work due to the lack of Internet connectivity or security issues. You will be working directly with our staff at these times.)

When you have made your selection, the program should display a confirmation screen like the one below:



When you see this confirmation screen, you can dismiss it by clicking the [CLOSE] button.

### **CONGRATULATIONS!**

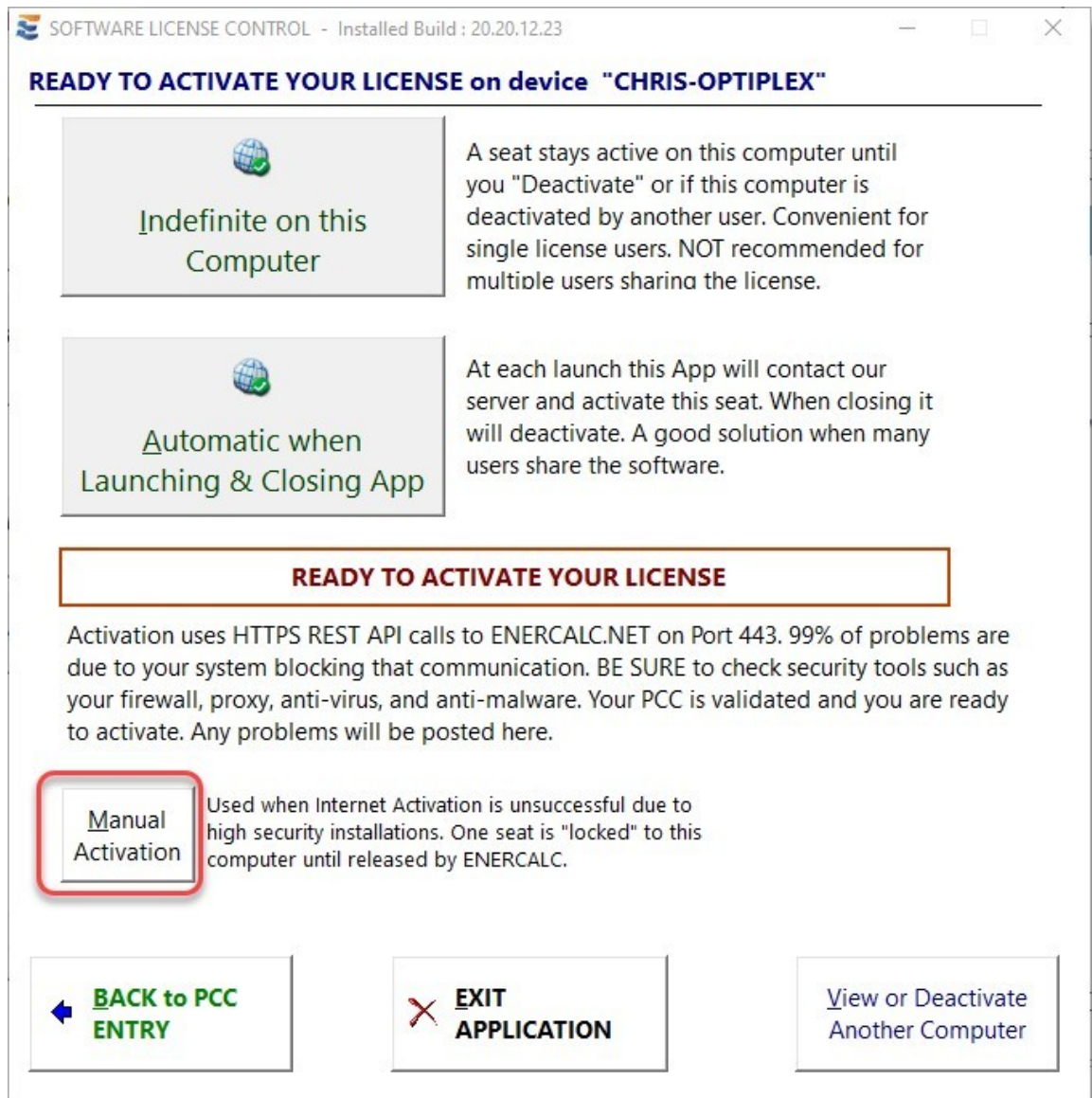
Your software is now fully activated!

**NOTE:** If you have any problems with activation, please be aware that during the activation process, the application must be able to communicate via Internet with Enercalc.net using

HTTPS over port 443 using REST API calls. Anti-Virus software sometimes interferes with this communication. If this happens briefly “pause” your Anti-Virus software until Internet Activation is complete.

## 1.1 Manual Activation

If you cannot activate the software using the simple **[Internet Activate]** method (because you have no connection, restricted access to the Internet due to a firewall, or your company prefers not to activate your installation this way), you can activate your software using the **[Manual Activation]** method.



Click the **[Manual Activation]** button. The system will provide some information in a Verification box:

VERIFY MANUAL ACTIVATION REQUEST

**NOTE! Manual Activation should only be used as a last resort!**

Internet Activation problems are ALWAYS caused by your computer being unable to contact our activation server due to firewall, anti virus, proxy server or other configurations **ON YOUR COMPUTER OR WITHIN YOUR ORGANIZATION.**

ENERCALC Internet Activation (IA) communicates with ENERCALC.NET using "REST API" calls over Port 443 (which is https). It is well designed and proven for nearly 10 years. It provides you with the most flexibility using your licensed seats on any computer.

The system will display detailed messages when the activation process cannot be completed. **Use them to guide you to a solution.**

When requesting a Manual Activation Code from ENERCALC, it is important to note the following:

- The code is specific to this computer only.
- The code will decrease your Internet Activation managed seat count by one.
- The code prevents the activation on this computer from being moved without contacting ENERCALC.
- Manual Activation is considerably less flexible than using the Internet Activation system.
- ENERCALC does not offer frequent Manual Activation Code requests as a means of users moving seats between computers.
- Manual Activation Codes do not allow installed software to run on Virtual Machines, Citrix Servers or other virtualized and widely available devices

Do you want to continue with a Manual Activation Request?

NO


YES

Then instructions will be provided to you using the screen shown below:

Manual Product Activation

**Manual Activation Code Request String :**


Please send Manual Activation Code for: KW-06000215-CHRIS-OPTIPLEX[215]esV5edZPUNsqjTC8GMyxBw6GM[0]0[Intel(R) UHD Graphics 630]. MSP Expiration: Jan 2007, Build: 20.20.12.23

 Copy to Clipboard


**STEP 1 :**  
Send this "Manual Activation Code Request String" to ENERCALC.  
  
Please paste the Request String into an email...DO NOT send a screen capture.  

[Click here to automatically create an email](#)

**STEP 2 :**  
After you receive the "Manual Activation Code" enter it below and click **Activate**  
*Paste Manual Activation Code below . . .*



**Activate**

 **Close**

NOTE: When using the Manual Activation method, the Manual Activation Code that you receive from ENERCALC can only be used to activate the **specific machine** that was used to make the Manual Activation Code request, because the request and the code actually contain the Computer Name and other data that is specific to that particular machine. However, you can still use the Internet Deactivate function to return a manually activated seat to your pool. And then you would be able to use that available seat from your pool to perform a normal Internet Activation on a different computer if desired.

## 1.2 Moving your Activation

This section will assist you in moving your activation from one computer to another:

[Moving Your Activation](#)