



Flex License Installation & Activation Procedure Structural Engineering Library

General

The Structural Engineering Library (SEL) must be installed on each computer where it will be used. DO NOT install on one computer and use a shortcut to the software on a different computer....IT WILL NOT RUN PROPERLY.

You can install on ANY computer where you might want to use it. You will need “activate” it on the computer where it will be used so it runs as a “activated” program.

The activated seat can easily be moved between computers as you desire using our Internet Activation system. An Internet connection is needed only for the brief moment of activating or deactivating.

Download Installation File

Download the installation file using this link : www.enercalc.com/ECSEL6_SETUP.htm

This link will ALWAYS install the MOST RECENT build of the software. Don't save the installation file for later use.....you will be saving the installer for what will soon be an old copy of the software because we update the builds quite often.

This installation file will ask you to paste in the Product Control Code that ENERCALC has assigned to you. Locate the email you received from ENERCALC that contains that long scrambled looking string of characters. Always use the most recent email because it has your latest PCC.

The PCC has all the information for your license, including your Subscription (or Maintenance & Support Plan) expiration date, name that will appear as the license holder, etc.

**NOTE! If you installed our DEMO version be sure to UNINSTALL IT.
It cannot be used as licensed software.**

Installation Procedure

This section describes installation of the software on any computer where you want to use it. At this time we assume you have downloaded and started the installation program file.

Immediately after starting the installation program you will view a "Welcome" screen identifying the product to be installed.

Click [Next >]

Next you will be asked to paste your Product Control Code (PCC)

The PCC is a scrambled looking string about 150 characters long that was supplied to you in one of your product delivery emails.

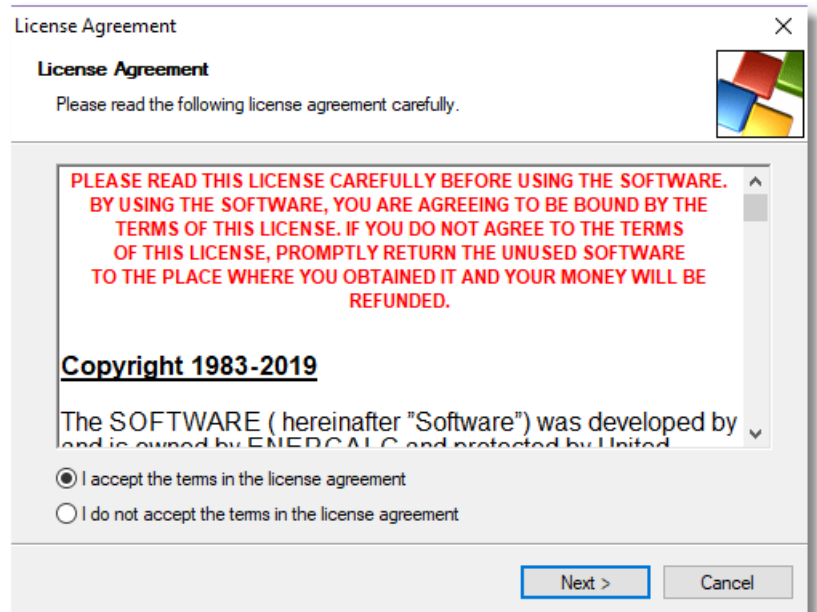
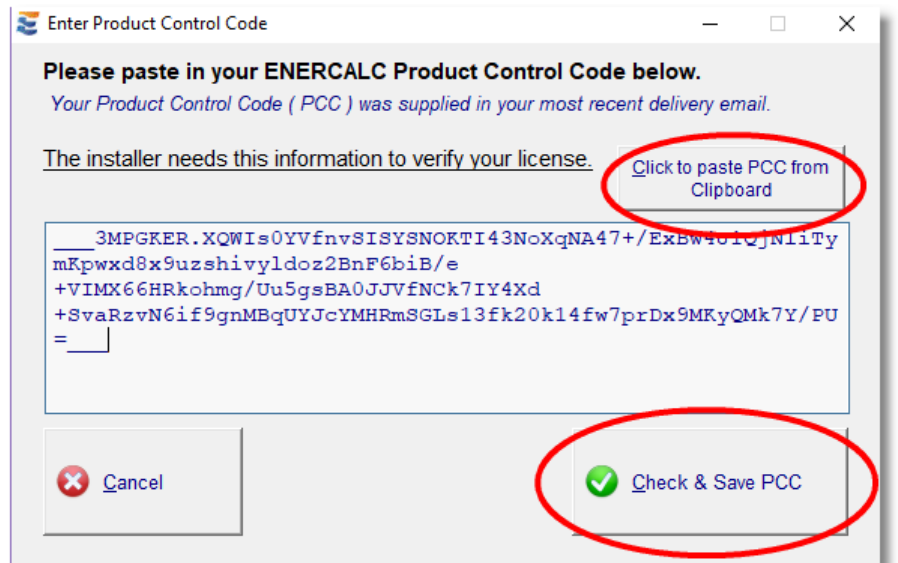
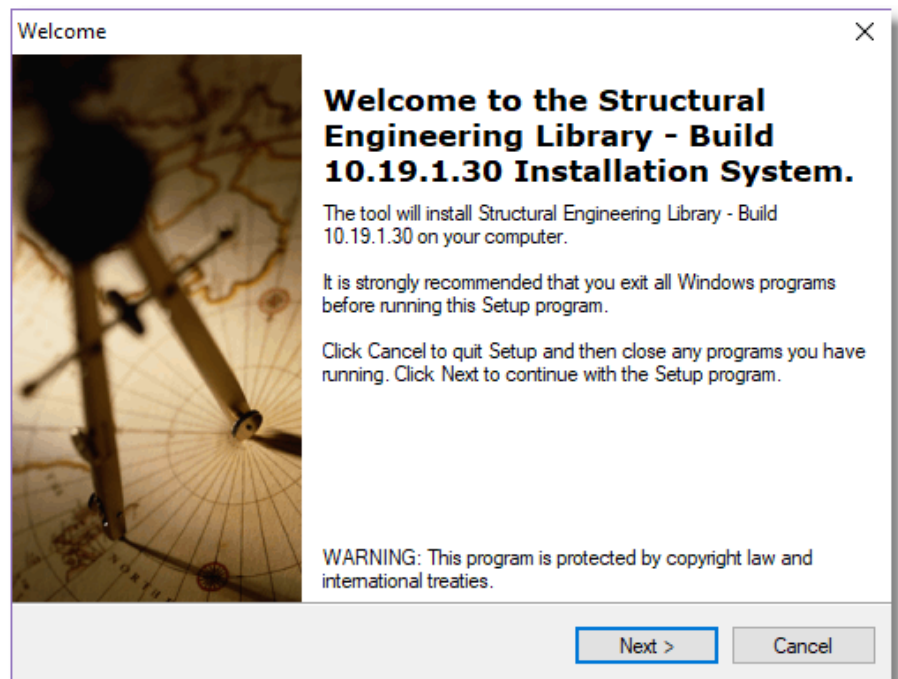
Locate your most recently received PCC, highlight it press Ctrl-C to copy it to the Windows Clipboard. Then click the button circled to paste it into the entry area.

Note! The same PCC is used in ALL your installations. You only need a new PCC when you renew your Subscription or MSP.

Now Click the Check & Save PCC button.

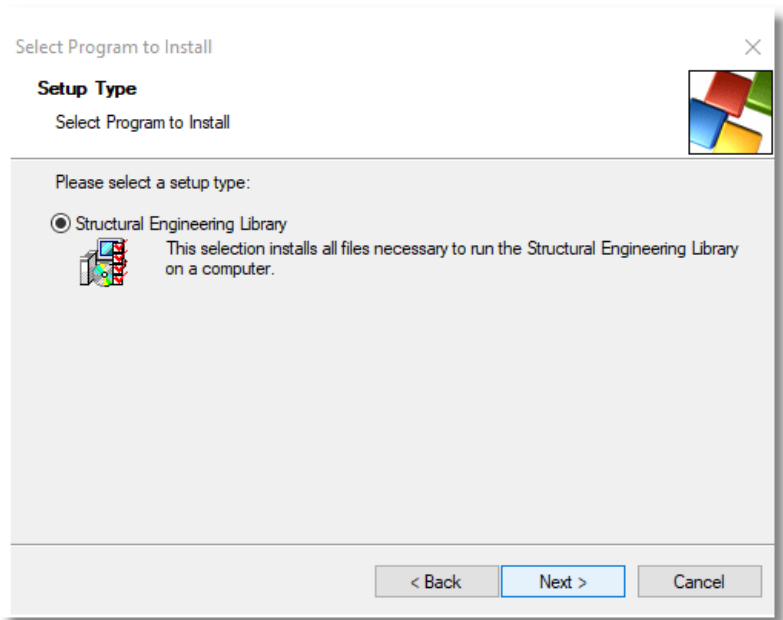
Next you will be asked to review the ENERCALC License Agreement. You have 21 days after purchase for subscriptions (60 days for perpetual licenses) to review the agreement and return the software, so it is not necessary to read the entire document at this time. After installation you can print and read the License Agreement using the License -> License Agreement menu selection.

Choose "I Accept..." and click [Next >]



Next you will click on the “Structural Engineering Library” for your type of setup.

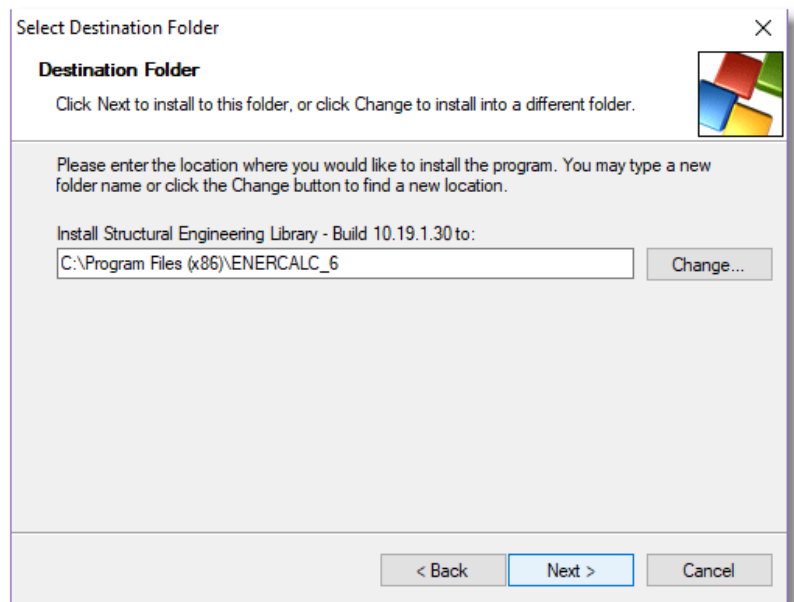
Click [Next >]



Next you will be asked to select the drive and folder location where the program files are to be placed. A standard location for Microsoft Windows installations is given and our best advice is to accept it.

ALWAYS INSTALL THE SOFTWARE ON THE COMPUTER WHERE IT WILL BE USED....NOT A REMOTE DRIVE.

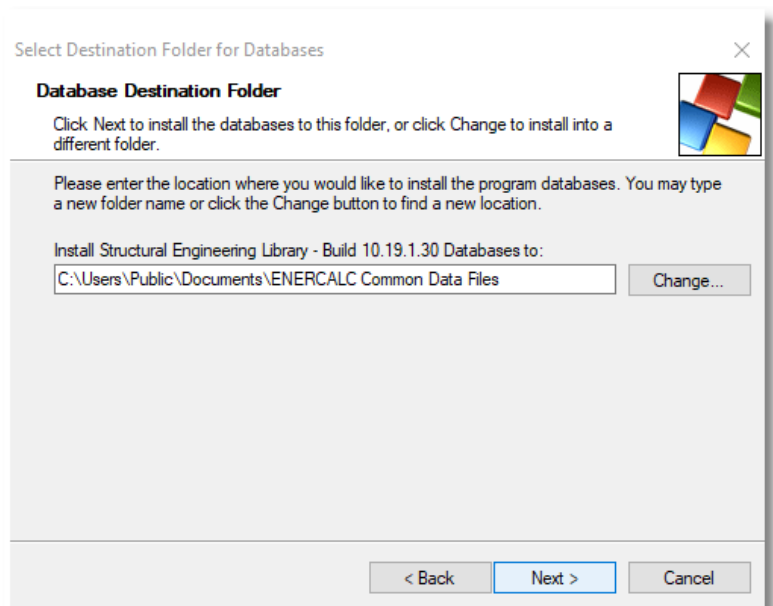
Click [Next >]



Next you will be asked to select the drive and folder location where shared databases will be kept. These include material databases. A standard location for Microsoft Windows installations is given and our best advice is to accept it.

ALWAYS INSTALL THE DATABASES ON THE COMPUTER WHERE IT WILL BE USED....NOT A REMOTE DRIVE.

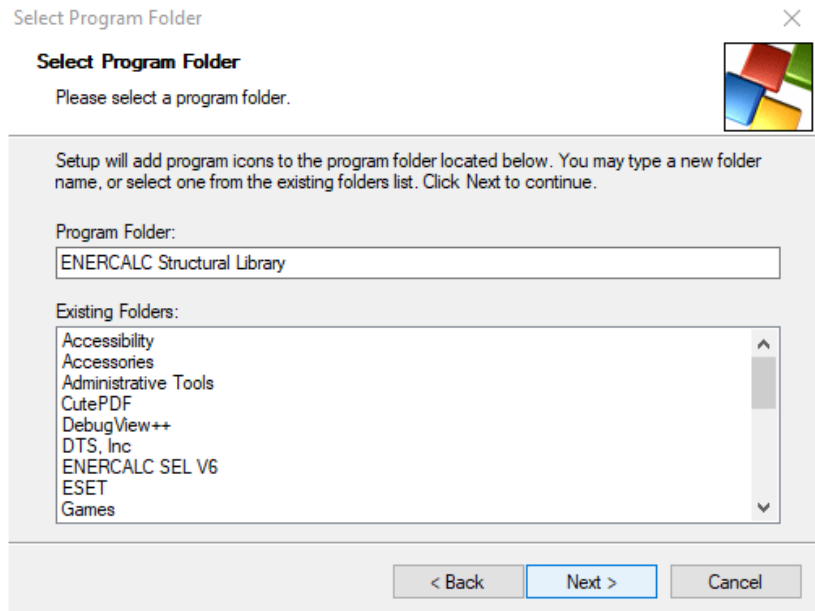
Click [Next >]



Next you will be asked to name the Start menu program group that will contain the links for starting up various parts of the software. (We recommend using what our installation program suggests.)

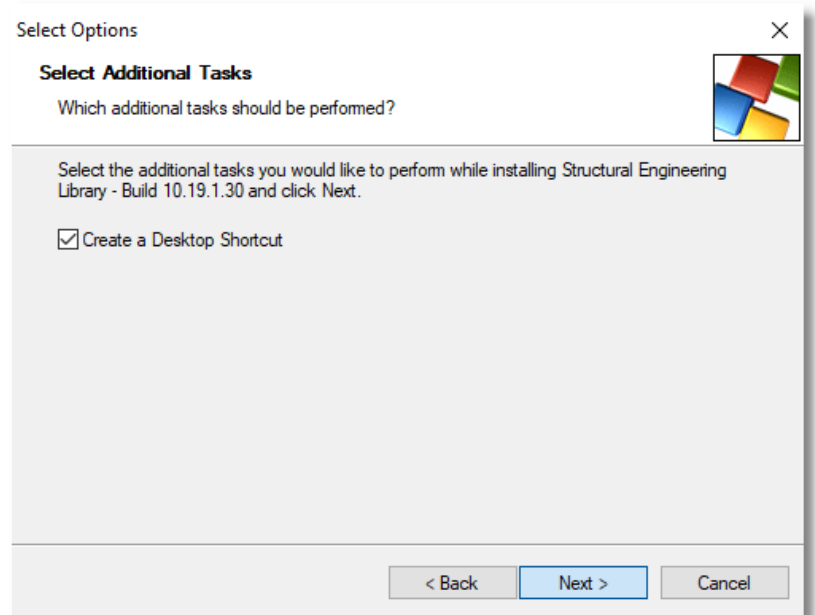
This program group will be placed within the Start | Programs selection within Windows.

Click [Next >]



This option allows you to create a desktop shortcut. The option is already checked, however if you wish you can uncheck.

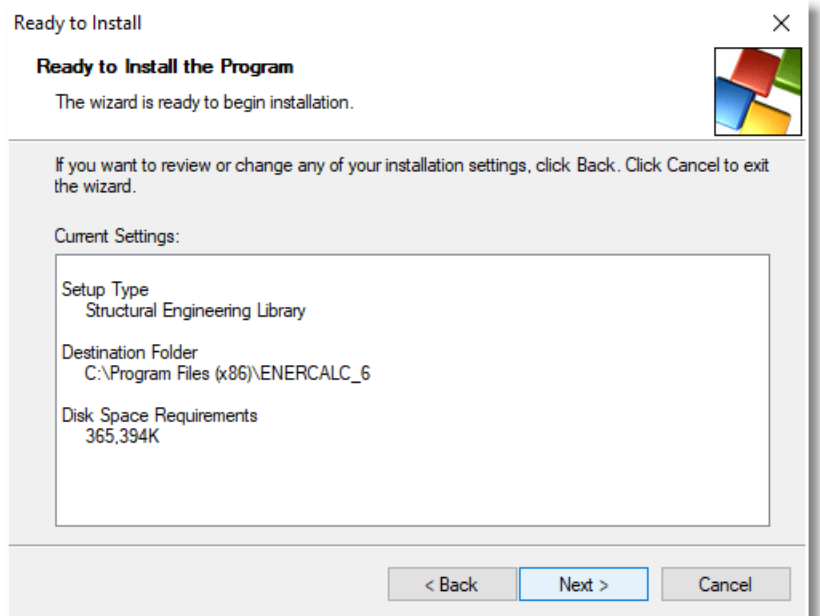
Click [Next >]



Next and immediately prior to the file placement process you will be given a summary of your selected items.

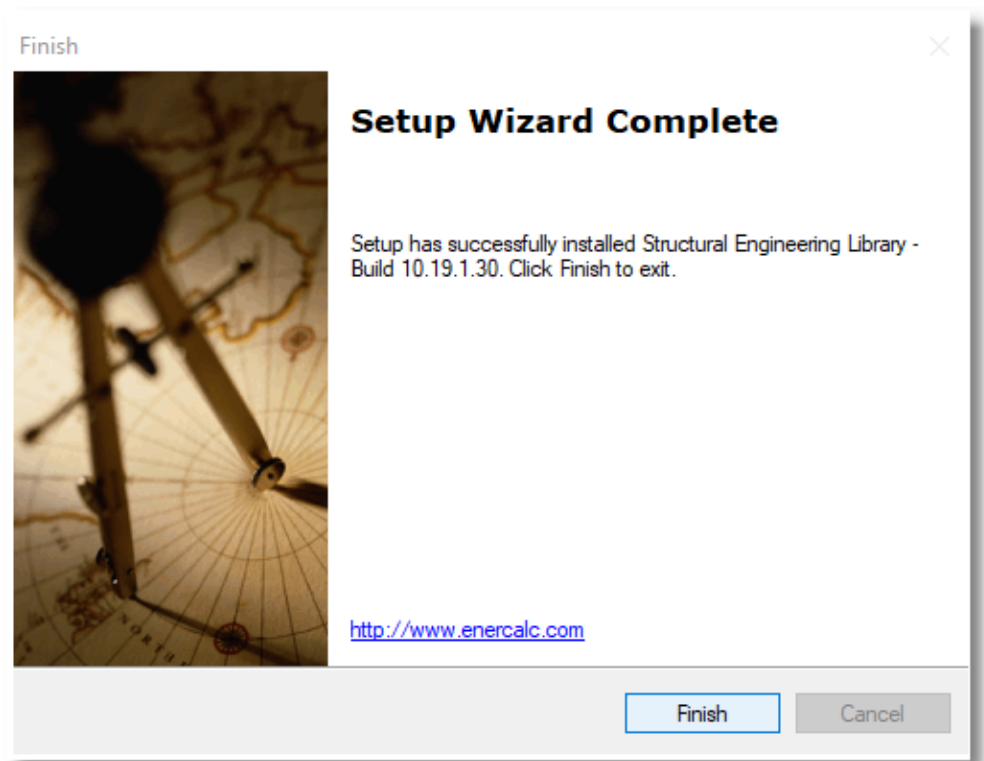
If all is OK then Click [Next >]

The files will then be copied to your computer



The final screen announces that the installation process is complete.

Click [Finish >]



SOFTWARE INSTALLATION IS NOW COMPLETE

Software Activation Procedure

Activation of the Software

The Structural Engineering Library has a security system that requires you to "Activate" the software. You will copy & paste a **Product Control Code (PCC)** into the software and then use an **[Internet Activate]** button to get permission from our Internet Activation Server to run as a registered program. When the software is "deactivated" it works as an evaluation version.

You can install the software on as many computers you want. Paste in the Product Control Code into each software installation.

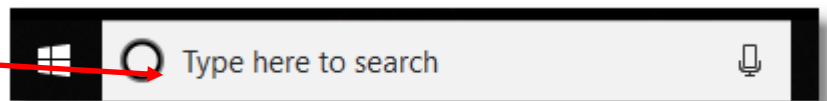
You will use "Internet Activation" and "Internet Deactivation" to activate the software on each computer up to the number of simultaneous licenses you have purchased for your "KW" user registration number. Deactivate to free it up for use on another computer, or use "Automatic activation" so the licenses are automatically available to your users who need them.

You only need to be Internet connected for the brief moment you activate or deactivate. Otherwise the computer will remember it's activated (Indefinite activation), or it will reactivate the next time you start the program (Automatic Activation).

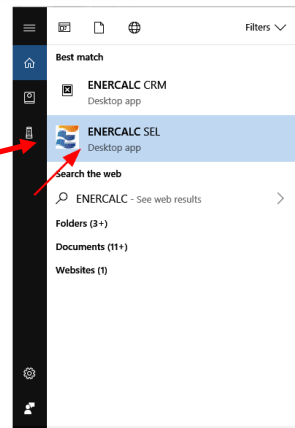
Our Internet Activation System uses HTTPS REST API calls to connect to Enercalc.net for communications. Most of the time it works great without any changes to firewalls or anti-virus software. Sometimes you must pause your anti-virus software briefly during activation or deactivation, or add a firewall rule to allow it to connect. In larger companies, your IT staff will usually manage this for you.

Now start the Structural Engineering Library Software....

Type ENERCALC in the "search bar next to the start button"



Then Click on "ENERCALC SEL" to launch your software



You can also open the software from your Desktop by simply clicking on the ENERCALC SEL Icon shortcut that was created during the Installation Procedure



If the software is not currently activated the window to the right will be displayed. This is the typical ENERCALC license activation window.

At this point you should select [Internet Activate] (providing you have an internet connection) to finish the process.

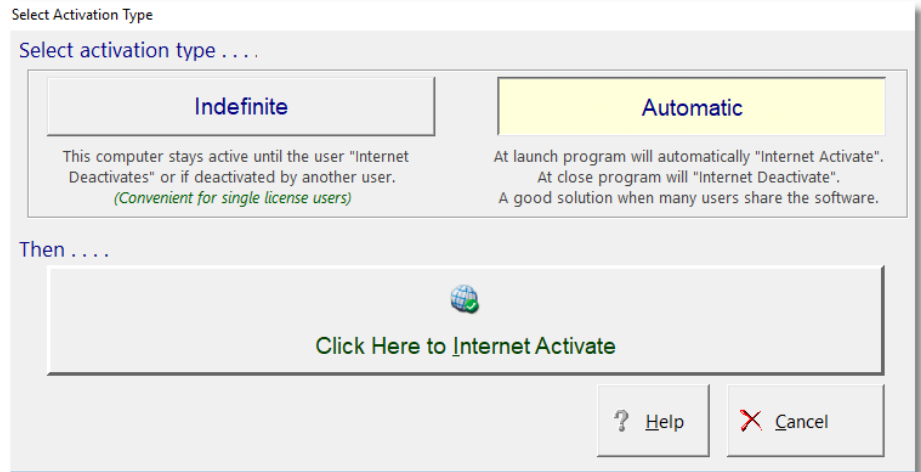
The [Manual Activation] button is used in cases where Internet Activation does not work due to the lack of Internet connectivity or security issues. You will be working directly with our staff at these times.



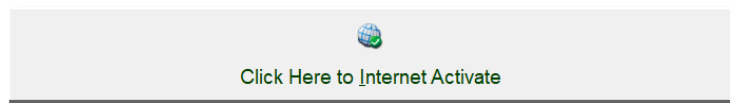
You will then be presented with two activation options:

Indefinite This selection will activate the program and leave it activated. Each time you start the software thereafter it will launch immediately as "activated".

Automatic Activation & Deactivation deactivates on exit and then automatically activates on launch. Ideal for larger firms with numerous users, sometimes in different locations.



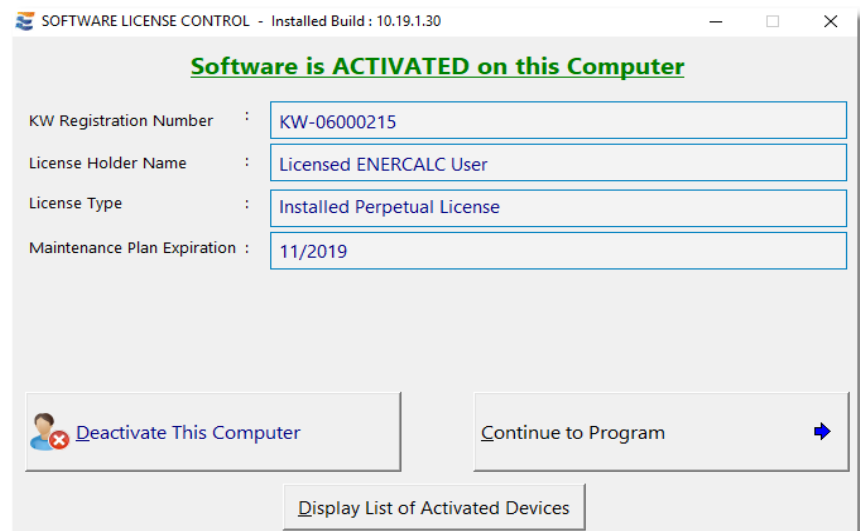
When you have made your selection, click:



NOTE! During the activation process ENERCALC must be able to communicate via Internet with Enercalc.net using HTTPS on port 443 using REST API calls. Anti-Virus software sometimes interferes with this communication. If this happens briefly "pause" your Anti-Virus software until Internet Activation is complete.

CONGRATULATIONS!

Your software is now fully activated!



Moving your Activation between Computers

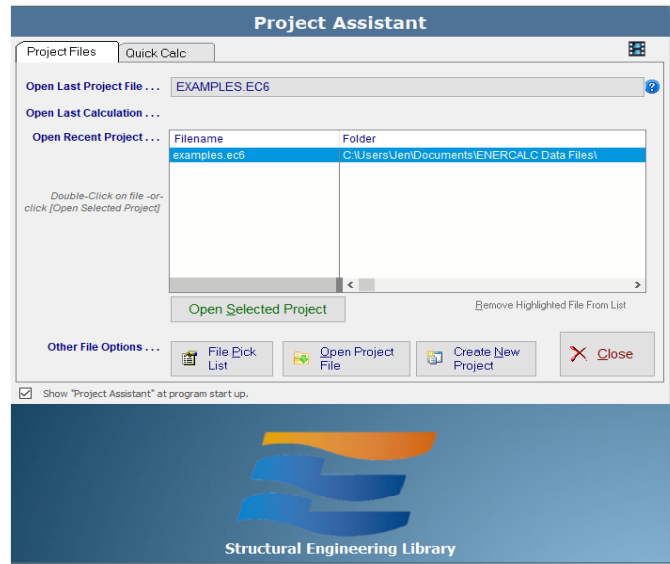
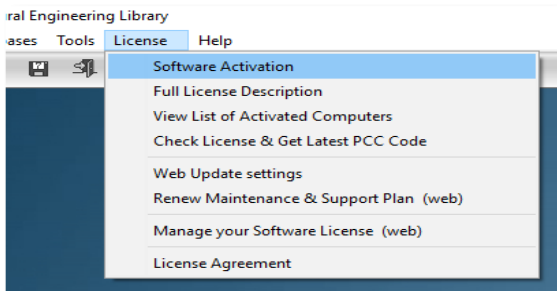
This section will assist you in moving your activation between computers. The SEL must already be installed on the computer and the Product Control Code entered. These instructions only describe using Internet Deactivate and Internet Activate to move the activation between computers.

You originally activated the software using the “Internet Activate” ability of the software. To return this activation to our server so that it can be available to you on another computer you will “Internet Deactivate” the software

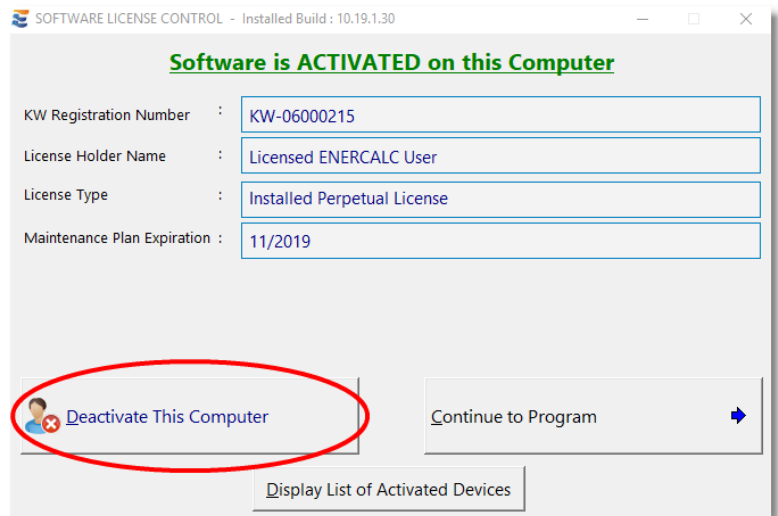
Follow these steps

Start the Structural Engineering Library. You will probably see the “Project Assistant” screen (as seen to the right). You will need to click the [Close] button.

Then click License>Software Activation in the menu bar



Click the [Deactivate This Computer] button you see on the screen to the right to return your “activation” to our server.



Your Activation has now been returned to our server, freeing up that license.

You can now go to another computer and “activate “ it using [Internet Activate] button.

