

# Flex License Installation & Activation Procedure

## *Structural Engineering Library Version 6*

### General

The Structural Engineering Library Version 6.0 ( SEL ) must be installed on each computer where it will be used. DO NOT install on one computer and use a shortcut to the software on a different computer...it WILL NOT run properly.

You can install the SEL on ANY computer where you might want to use it. You will need "activate" it on the computer where it will be used so it runs as a "activated" program.

The activated seat can easily be moved between computers as you desire using our Internet Activation system. An Internet connection is needed only for the brief moment of activating or deactivating.

### Download Installation File

Download the installation file using this link : [www.enercalc.com/ECSEL6\\_SETUP.htm](http://www.enercalc.com/ECSEL6_SETUP.htm)

This file can install the Structural Engineering Library and/or the Network License Manager as needed.

You need to select only Structural Engineering Library. Ignore the Network License Manager....it is for network licenses and you will not be able to use it with your license type (trust us).

This link will ALWAYS install the MOST RECENT build of the software. Don't save the installation file for later use.....you will be saving the installer for an old copy of the software because we update the builds very often.

This installation file will ask you to paste in the Product Control Code that ENERCALC has assigned to you. Locate the email you received from ENERCALC that contains that long scrambled looking string of characters. Always use the most recent email because it has your latest PCC.

The PCC has all the information for your license, including your Maintenance & Support Plan expiration date, name that will appear as the license holder, etc.

**NOTE!** If you installed our DEMO version be sure to UNINSTALL IT. It cannot be used as licensed software.

### Installation Procedure

This section describes installation of the software on any computer where you want to use it. At this time we assume you have downloaded and started the installation program file.

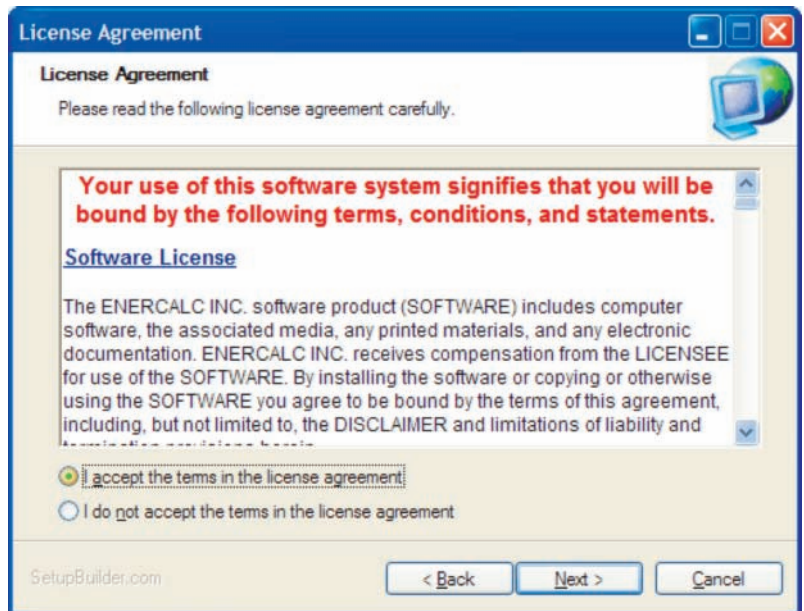
Immediately after starting the installation program you will view a "Welcome" screen identifying the product to be installed.

Click [Next >]



ENERCALC License Agreement. You have 60 days after purchase to review the agreement and return the software, so it is not necessary to read the entire document at this time. After installation you can print and read the License Agreement using the License->License Agreement menu selection.

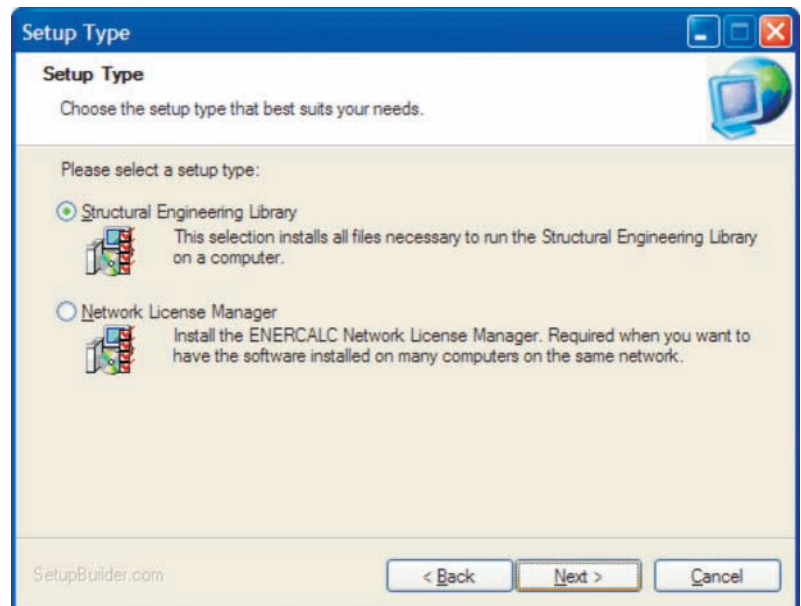
Choose "I Accept...." and click [Next >]



Next you are given two installation options.

For use with Flex licenses select "Structural Engineering Library". The "Network License Manager" selection is only used when you have purchased a network license. See our separate document for those installation instructions.

Click [Next >]

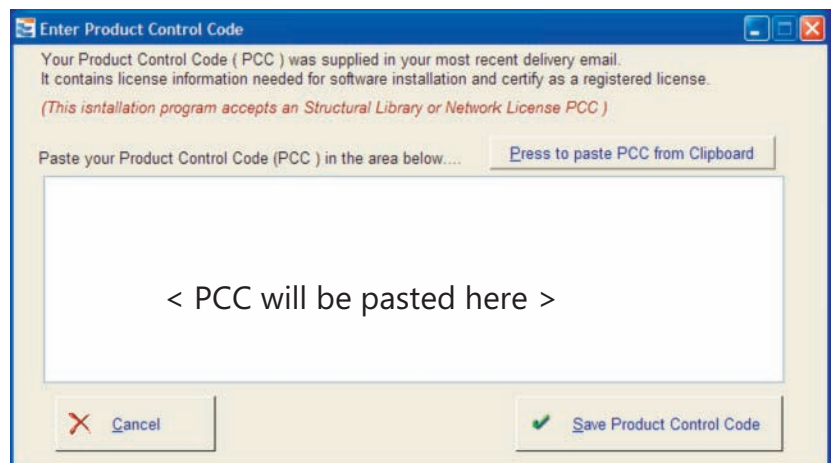


Next you will be asked to paste in your Product Control Code ( PCC ). Locate this code in your most recent software delivery email, highlight it and press [Ctrl-C] to copy it into the clipboard.

Don't try to type it in...it has too many characters and can easily be scrambled.

Use the [Press to paste....] Button to insert the copied PCC into the area provided.

Click [Save Product Control Code]

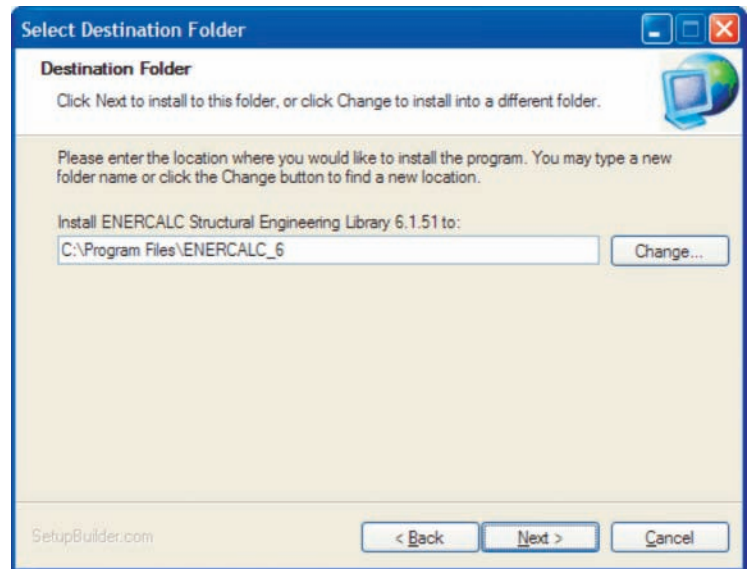


Note! If the code is invalid you will be shown a message window. We suggest going back to your email with the PCC and carefully copying it again. Next you will be asked to select the drive and folder location where the program files are to be placed. A

standard location for Microsoft Windows installations is given and our best advice is to accept it.

**ALWAYS INSTALL THE SOFTWARE ON THE COMPUTER WHERE IT WILL BE USED....NOT A REMOTE DRIVE.**

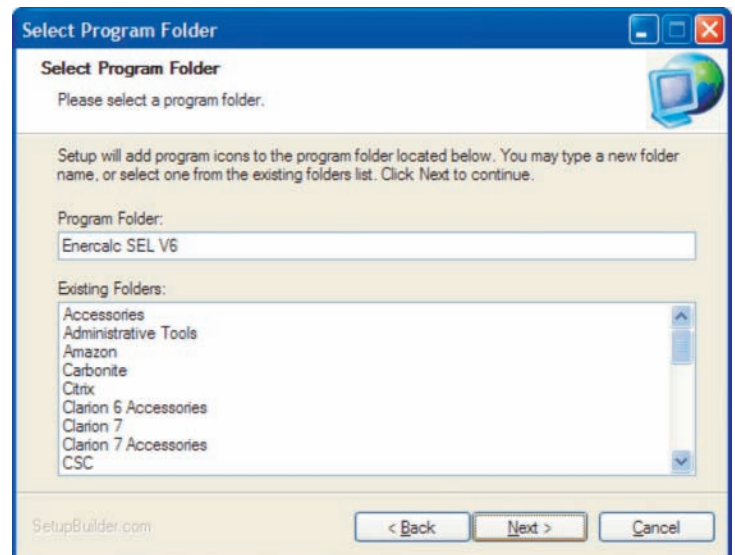
Click [Next >]



Next you will be asked to name the Start menu program group that will contain the links for starting up various parts of the software. (We recommend using what our installation program suggests.)

This program group will be placed within the Start | Programs selection within Windows.

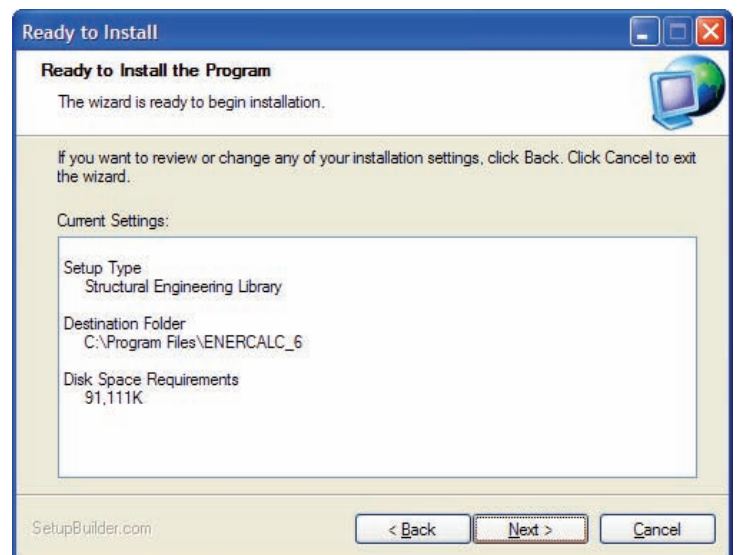
Click [Next >]



Next and immediately prior to the file placement process you will be given a summary of your selected items.

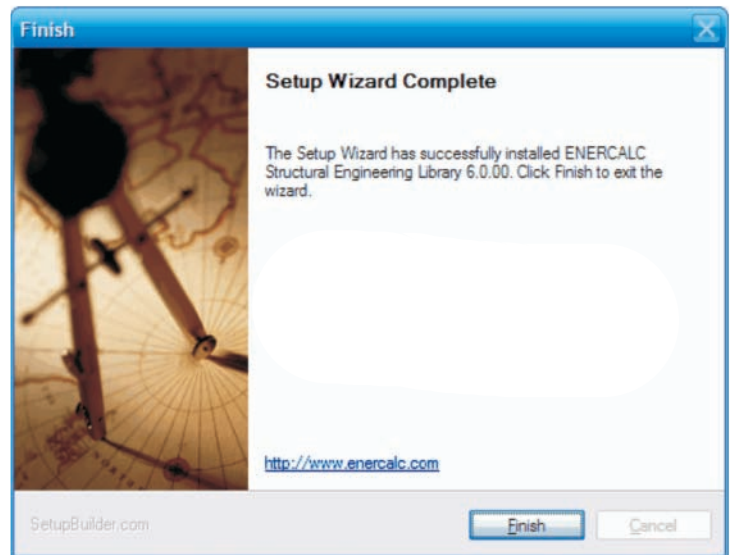
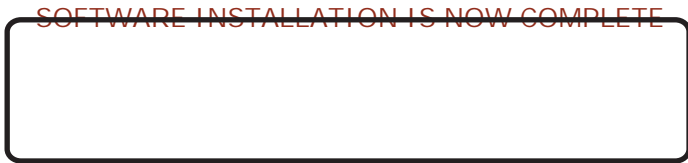
If all is OK then Click [Next >]

The files will then be copied to your computer.



The final screen announces that the installation process is complete.

Click [Finish]



## Software Activation Procedure

### Activation of the software

SEL Version 6 has a security system that requires you to "Activate" the software. You will copy & paste a Product Control Code ( PCC ) into the software and then use an [Internet Activate] button to get permission from our Internet Activation Server to run as a registered program . When the software is "deactivated" it works as an evaluation version.

You can install the software on computers you want. Paste in the Product Control Code into each software installation.

You will use "Internet Activation" and "Internet Deactivation" to activate the software on each computer up to the number of simultaneous licenses you have purchased for your "KW" user registration number. Deactivate to free it up for use on another computer.

You only need to be Internet connected for the brief moment you activate or deactivate. Otherwise the computer will remember its activated.

Our Internet Activation system (and Web Update also) uses HTTP on Port 80 for communications. Most of the time it works great without any changes to firewalls or anti-virus software. Sometimes you must pause your anti-virus software briefly during activation or deactivation.

There are other methods of manually activating the software if you do not have an Internet Connection. Please see the "For Our Users" page at our web site for "Manual License Activation".

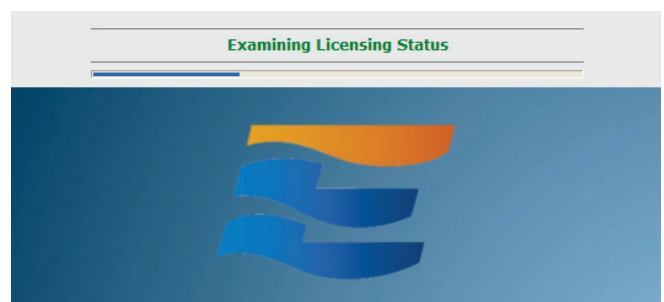
Now start the Structural Engineering Library software.....



**-> Programs -> Enercalc SEL V6 -> Structural Library Version 6**

The software will start and search for permission to run as a licensed program.

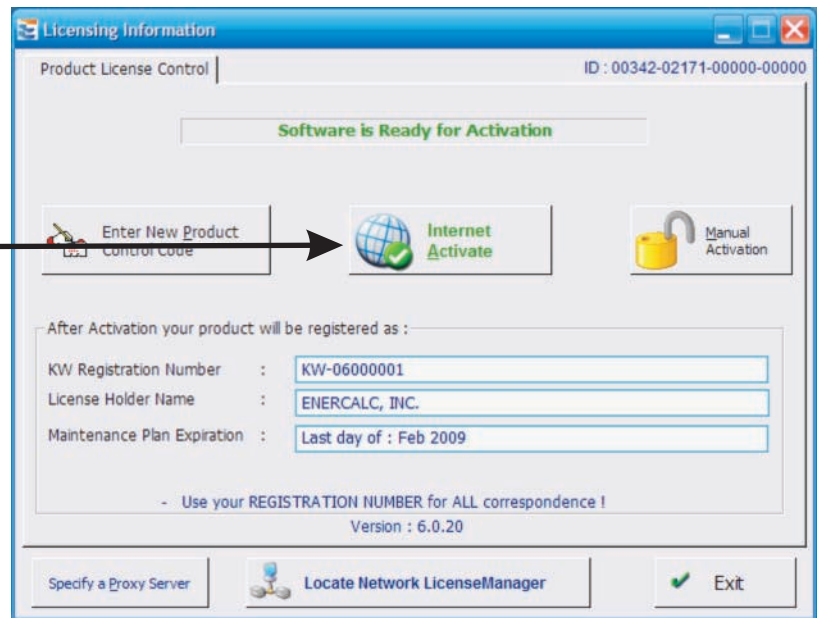
While it is searching it will show a small window as shown to the right.



ENERCALC license activation window.

At this point you should select [Internet Activate] (providing you have an Internet connection) to finish the process.

The [Manual Activation] button is used in cases where Internet Activation does not work due to lack of Internet connectivity or security issues. You will be working directly with our staff at these times.



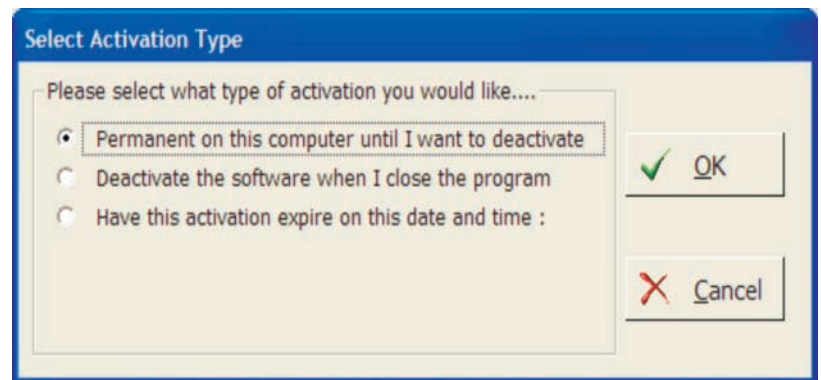
Next you are offered a choice of three activation types :

**Permanent :** The program is activated on your computer until you “Internet Deactivate” it or you remotely deactivate it in order to activate another computer.

**Deactivate on Exit :** Program automatically deactivates itself when quitting and sends that deactivation message to our activation server.

This is good for users who have many licenses and want to easily have users share the “pool” of licenses.

**Deactivate on Time & Date :** You specify a time and date for the software to deactivate. At that time and date our server deactivates your computer in its records. The next time you launch the software on your computer it will need to be activated again.



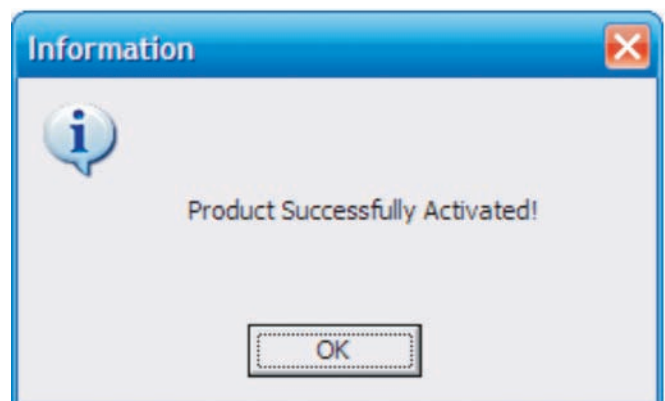
Make your selection and click [OK] to continue with the activation.

**NOTE!** During the activation process ENERCALC must be able to communicate over the Internet using HTTP on port 80 using XML. Anti-Virus software can sometimes interfere with this communication. If this happens “pause” your Anti-Virus software for the brief moment that Internet Activation is performed.

The activation process will take just a moment and you will be notified that the process was successful :

Select [OK] and you will be happy to see that your software is now fully activated !

**CONGRATULATIONS !**



## Moving your Activation between Computers

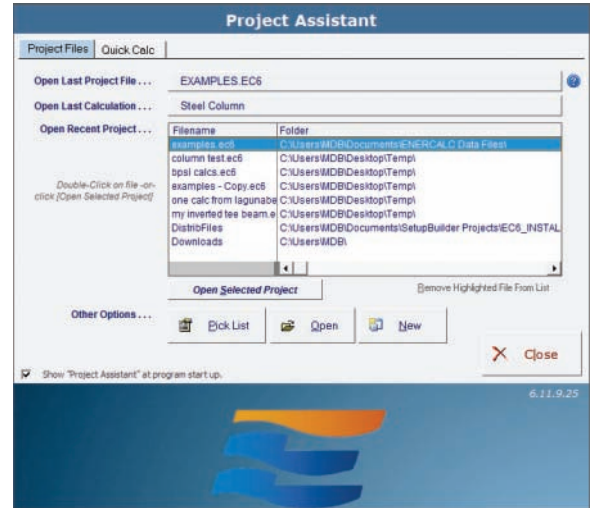
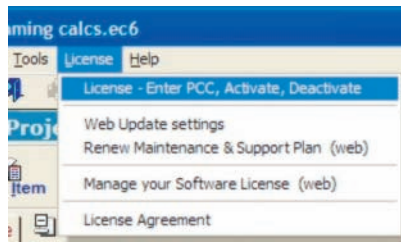
This section will assist you in moving your activation between computers. The SEL must already be installed on the computer and the Product Control Code entered. These instructions only describe using Internet Deactivate and Internet Activate to move the activation between computers.

You originally activated the software using the "Internet Activate" ability of the software. To return this activation to our server so that it can be available to you on another computer you will "Internet Deactivate" the software.

### Follow these steps

Start the Structural Engineering Library. You will probably see the "Project Assistant" screen seen to the right. You will need to click the [Close] button.

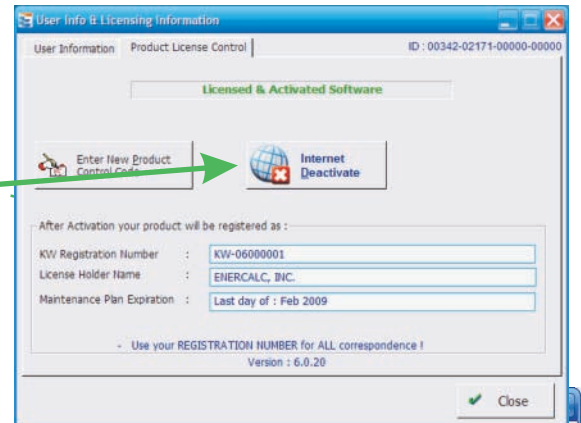
Then click License>Software Activation in the menu bar.



You will now see the "User Info & Licensing" screen shown to the right.

Click the [Internet Deactivate] button you see on the screen to the right to return your "activation" to our server.

**Note!** You must allow the ENERCALC file "EC6.EXE" Internet access through your firewall or anti-virus software.



After a moment a "License Successfully Returned" window will be displayed.



Your activation has now been returned to our server .

You can now go to another computer and "activate" it using the [Internet Activate] button on the User Info and Licensing screen.

